

CUIR AU CARRE  
PARIS



éric gizard design

présente



Collection **Kaleïdoscope**

2023

**Kaléidoscope**

[ka.le.i.dɔs.kɔp] *nom masculin*, se dit d'un ensemble de formes et de couleurs intimement imbriquées les unes aux autres.



## Créateur **Éric Gizard**

Entre tradition et modernité, Eric Gizard puise son inspiration et ses références dans les Arts Décoratifs contemporains. Son intelligence sensible des espaces et des objets porte la marque d'un style très personnel et contrasté. Adepté du clair obscur, il aime confronter de manière inhabituelle matières, couleurs, et effets de lumière. Passionné par son époque sans renier le passé, il intervient sur des sujets très diversifiés en apportant des solutions très personnelles, toujours marquées d'un style original. Ce goût affirmé pour les rencontres et l'éclectisme l'ont amené à développer une activité dans le design en créant des formes simples, répondant à des principes contemporains de légèreté, fluidité et lisibilité.

**Kaléidoscope** met en mouvement –perpétuel– la diffraction des motifs, des formes et des couleurs.

Né du travail photographique mené par Eric Gizard, **Kaléidoscope** souligne un graphisme empreint des années 80, dans une approche esthétique et contemporaine.

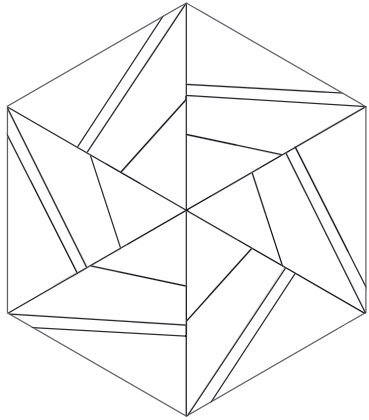
La puissance du dessin et l’alliance des couleurs forment un paysage graphique qui transporte le spectateur dans un voyage hypnotique et dans sa mélodie polychromique.

Jeux de miroirs, infinies combinaisons, dissymétrie, mille métamorphoses, **Kaléidoscope** redimensionne notre savoir-faire, explorant le travail séculaire de la marqueterie et plonge le spectateur en apnée dans la couleur.

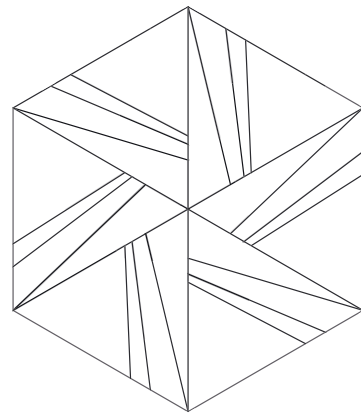
Organique et charnel, le cuir velours préféré pour son aspect brut et la profondeur de ses couleurs, se placent au cœur de la création.

**Kaléidoscope** égraine ses secrets comme on explore des rêves sans fin.

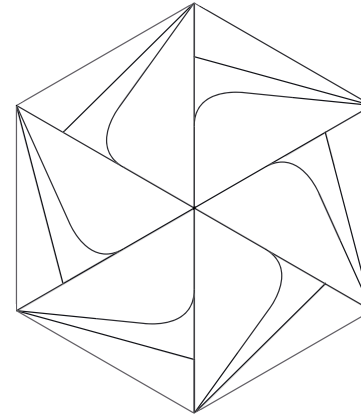
# Motifs **Kaleïdoscope**



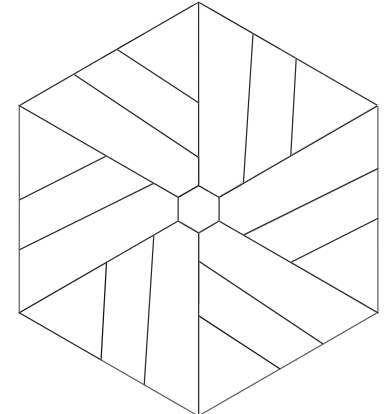
Pyxidia



Flora



Giglio



Strimena

Chaque motif se décline en 8 gammes chromatiques

**Pacific**

**Namib**

**Natron**

**Vik**

**Mouzaïa**

**Macchiato**

**Primary**

**Elafonisi**

# Marqueterie de **cuir**

Nous utilisons la technique de la marqueterie de cuir pour la mise en oeuvre de **Kaleïdoscope**.

Les pièces de **cuir** sont découpées avec précision, puis assemblées à la main par nos **artisans**. Chaque ensemble ainsi marqueté forme un hexagone unique.

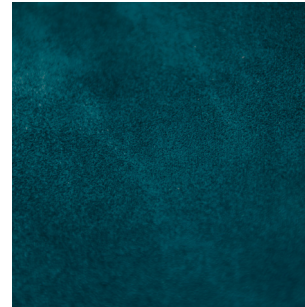
En utilisant une colle adaptée pour garantir une adhérence solide et durable, les artisans veillent à ce que chaque découpe soit **parfaitement** alignée.

# Chromatique **Pacifica**

Coloris : **Concreto**



Coloris : **Kovalt**



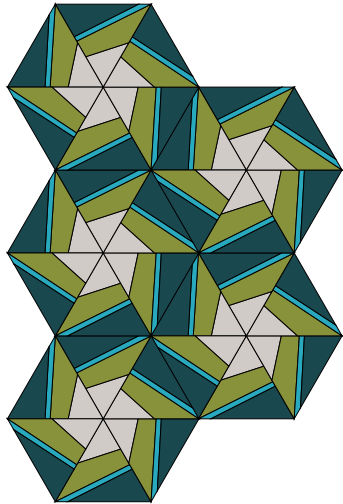
Coloris : **Rubus**



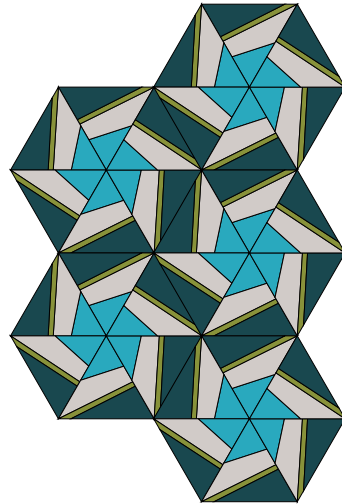
Coloris : **Kyan**



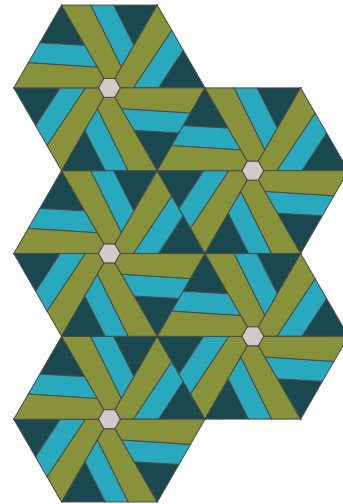
KALEÏDOSCOPE  
P A C I F I C A



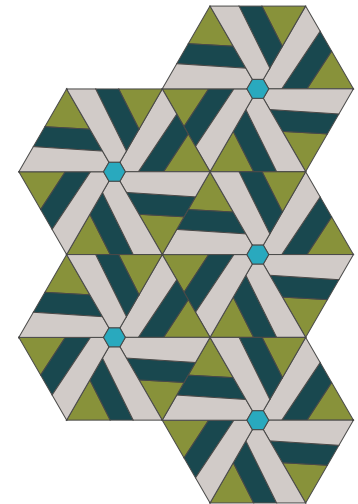
Pyxidia - 1



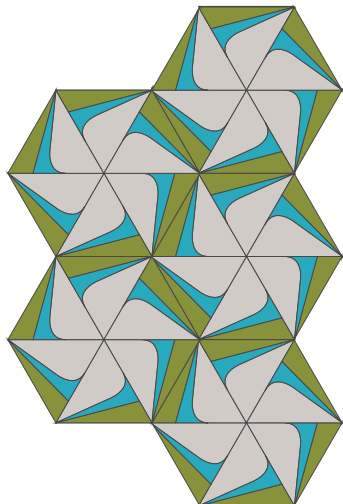
Pyxidia - 23



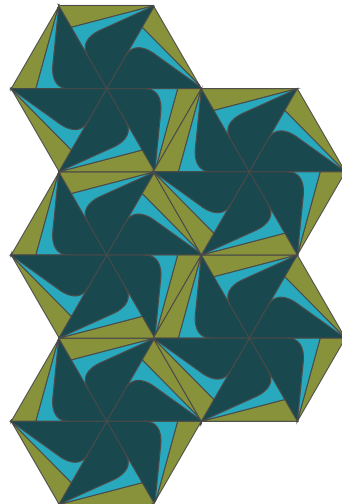
Strimena - 1



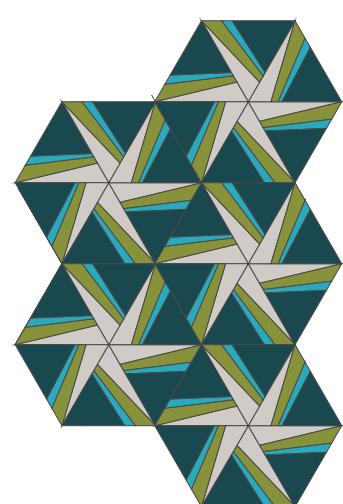
Strimena - 22



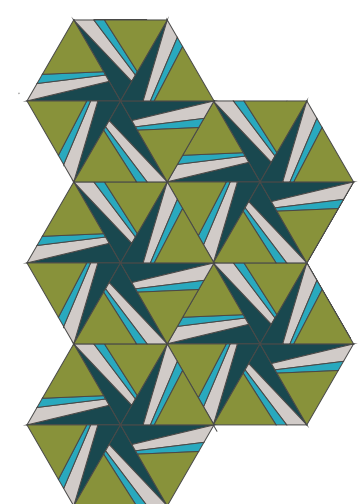
Giglio - 1



Giglio - 20

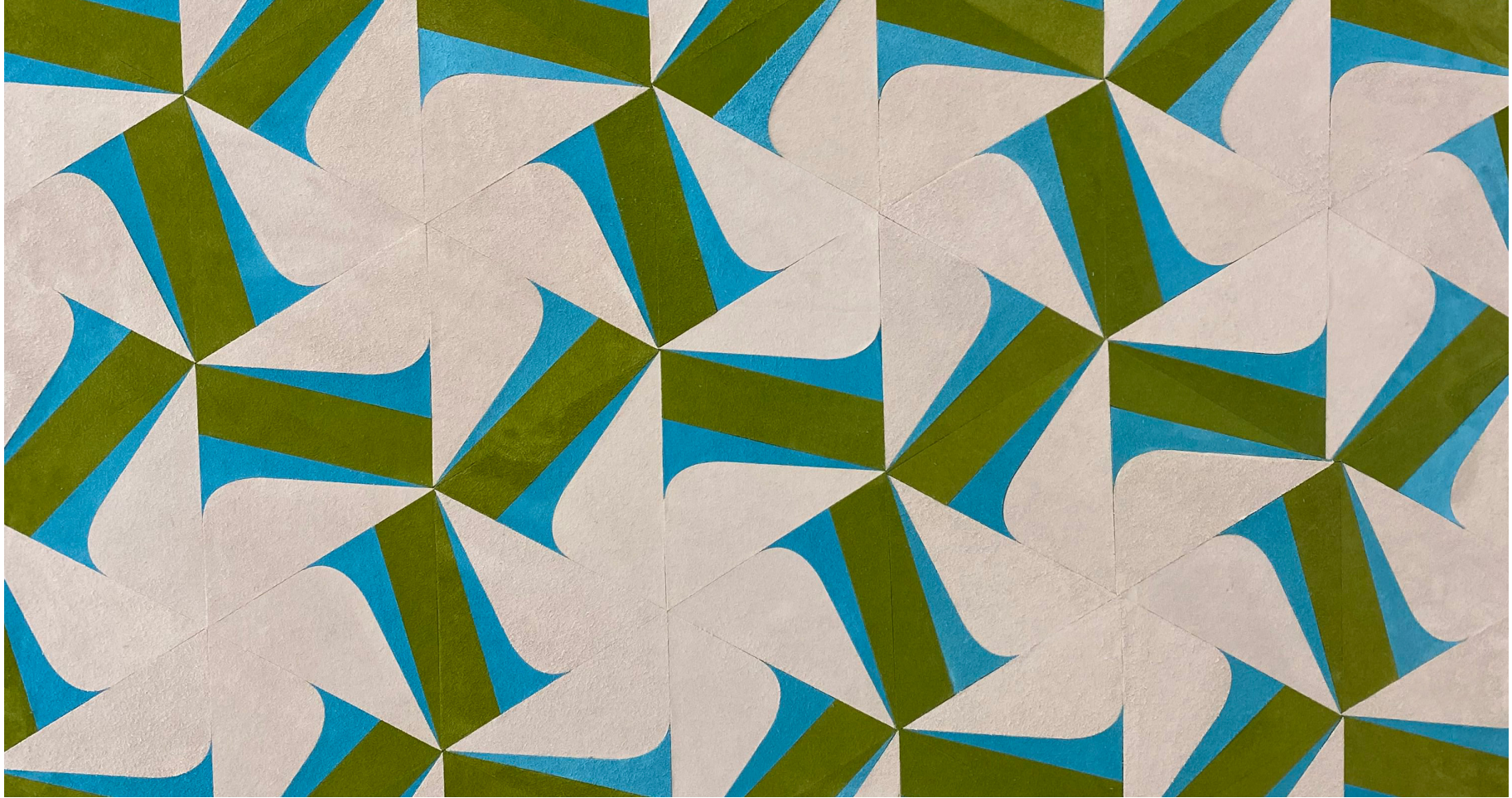


Floro - 1



Floro - 14





P A C I F I C A

Giglio - 1

«sans quitter la scène des yeux, je tournais le kaléidoscope  
doucement [...] »

# Chromatique **Namib**

Coloris : **Palyno**



Coloris : **Zefiri**



Coloris : **Concreto**

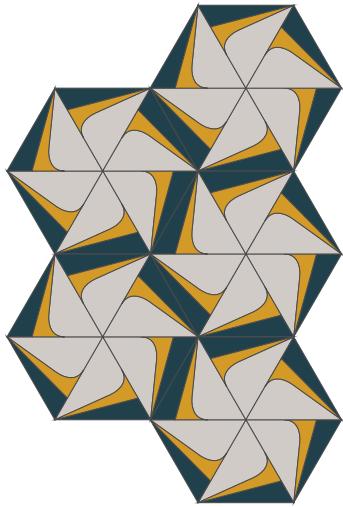


Coloris : **Nix**

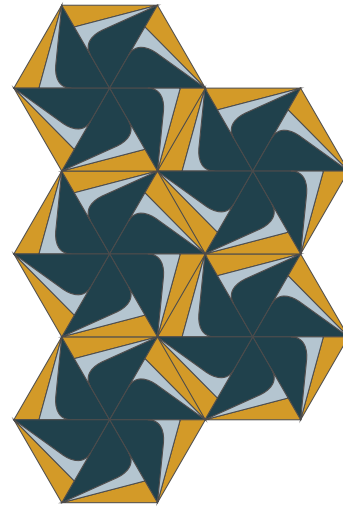


KALEÏDOSCOPE

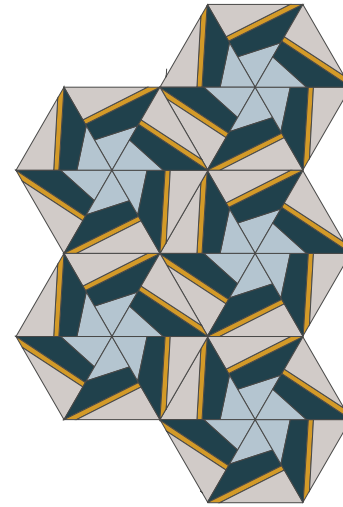
N A M I B



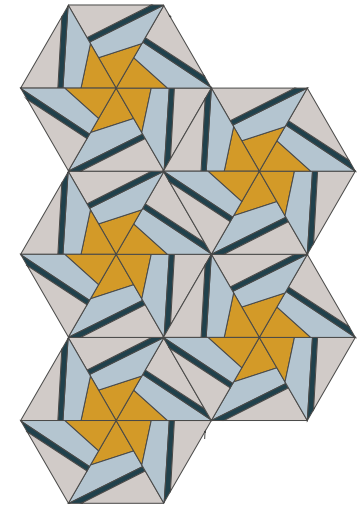
Giglio - 15



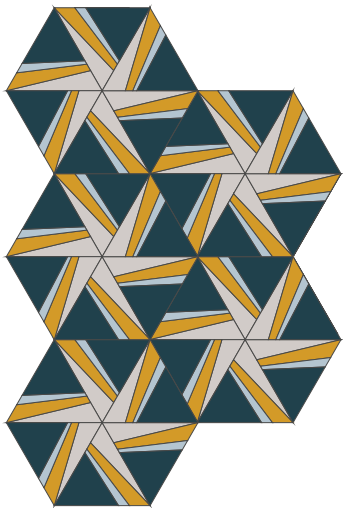
Giglio - 4



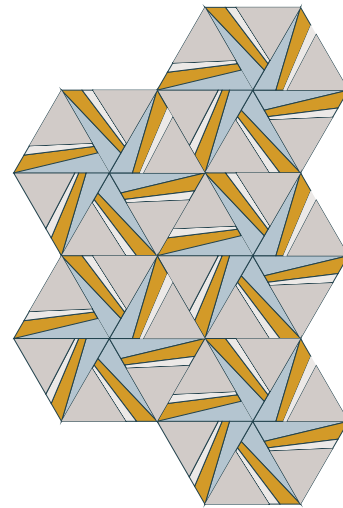
Pyxidia - 4



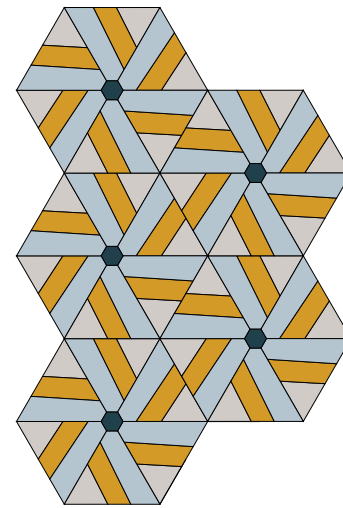
Pyxidia - 9



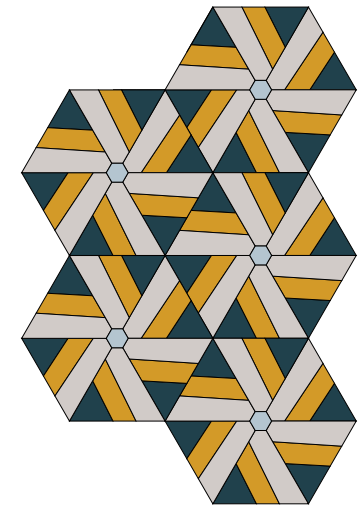
Floro - 8



Floro - 5



Strimena - 5



Strimena - 9



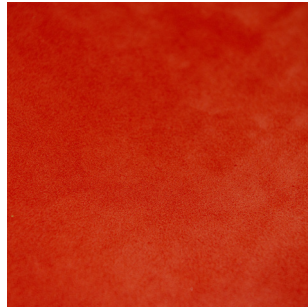
N A M I B

Strimena - 9

« [...] doucement, admirant la lente modification de la rosace. [...] »

# Chromatique Natron

Coloris : **Kokino**



Coloris : **Flamingo**



Coloris : **Concreto**



Coloris : **Vinum**

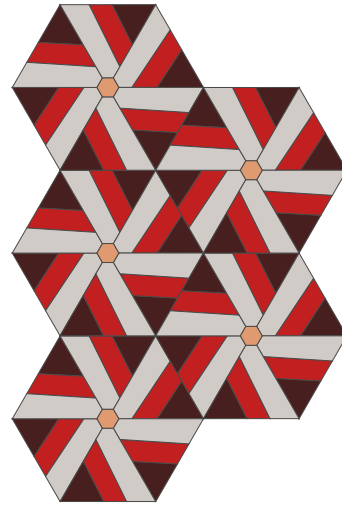


KALEÏDOSCOPE

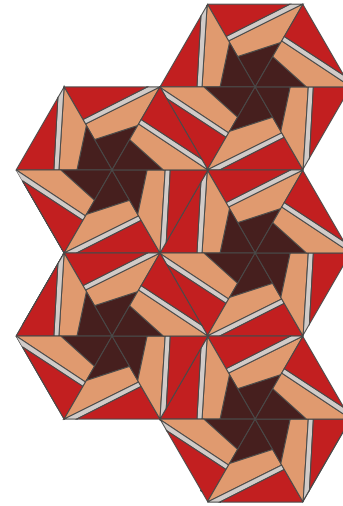
N A T R O N



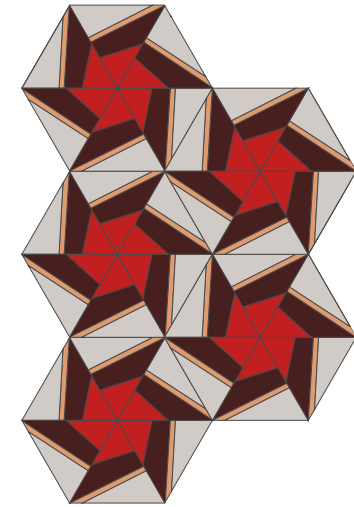
Strimena - 12



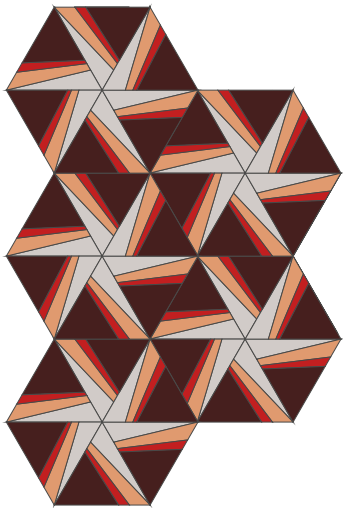
Strimena - 20



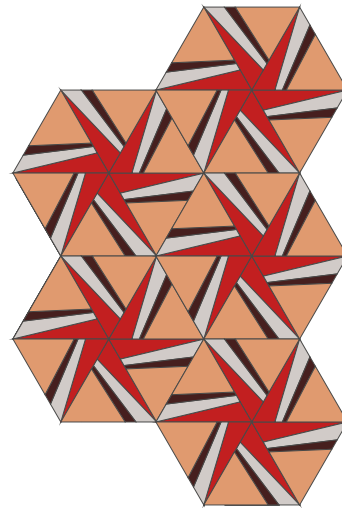
Pyxidia - 6



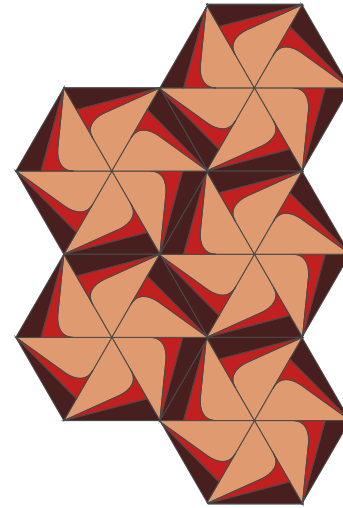
Pyxidia - 10



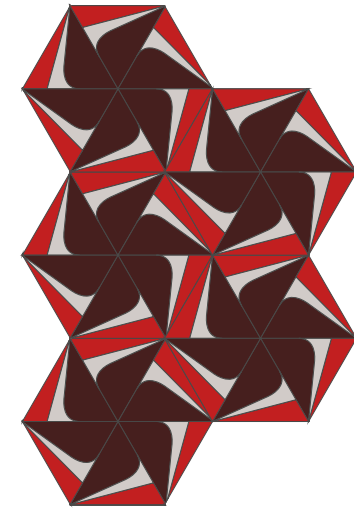
Floro - 11



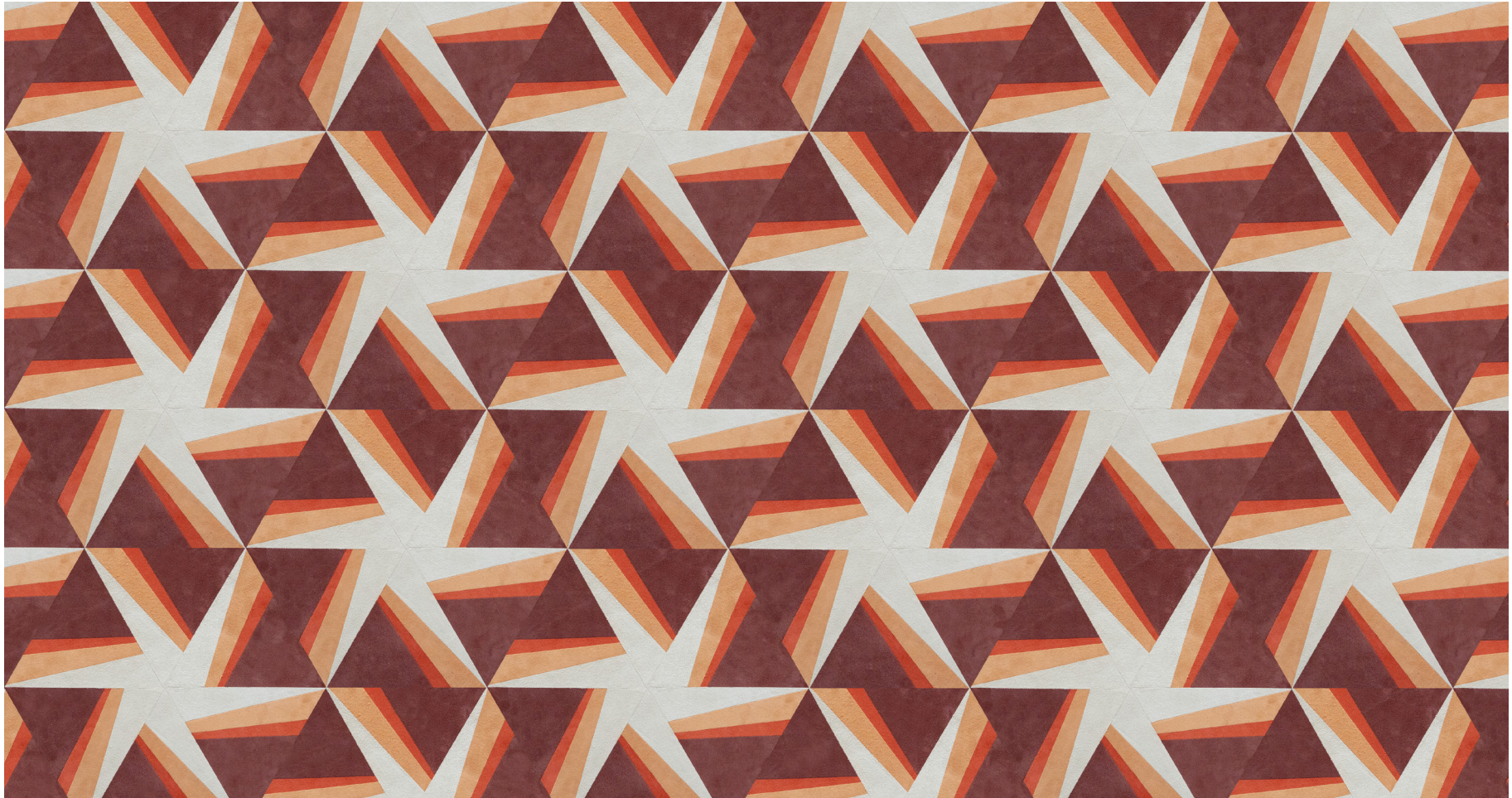
Floro - 18



Giglio - 8



Giglio - 16



N A T R O N

Floro - 11

« [...] Parfois l'insensible déplacement d'un des éléments entraînait des conséquences bouleversantes. [...] »

# Chromatique

## Vik

Coloris : **Niksé**



Coloris : **Politoma**



Coloris : **Concreto**



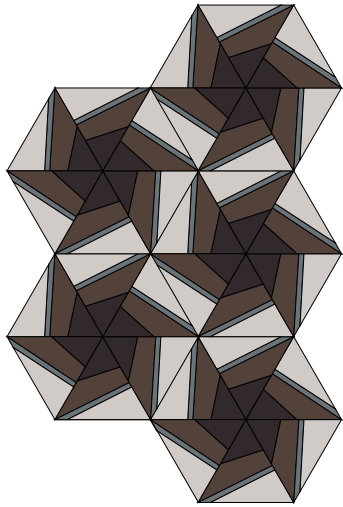
Coloris : **Ametista**



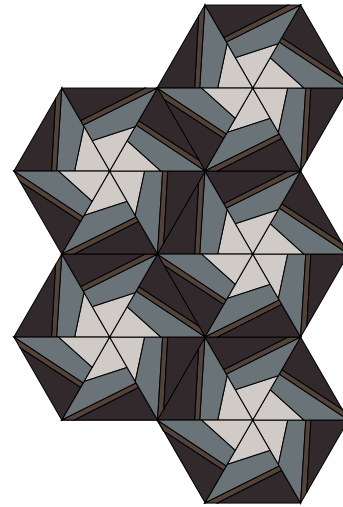


KALEÏDOSCOPE

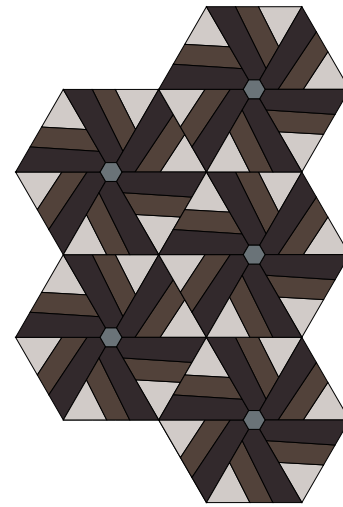
V I K



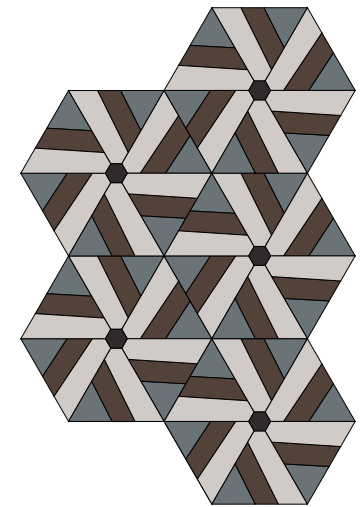
Pyxidia - 6



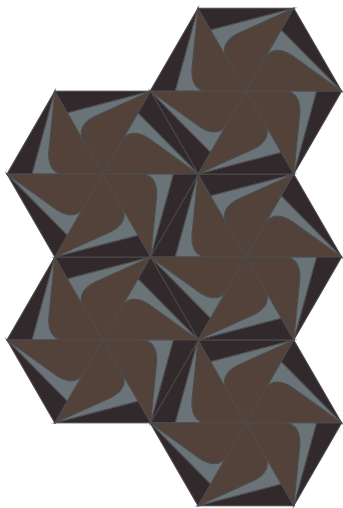
Pyxidia - 16



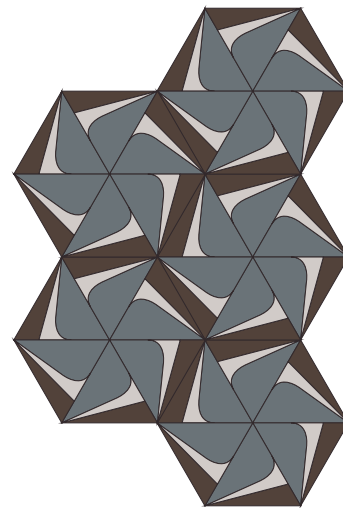
Strimena - 8



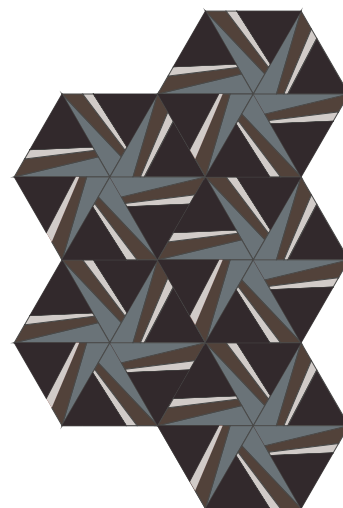
Strimena - 16



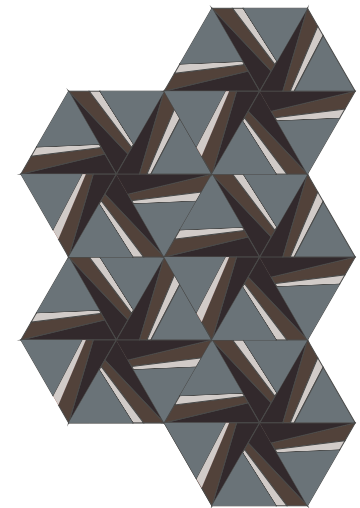
Giglio - 10



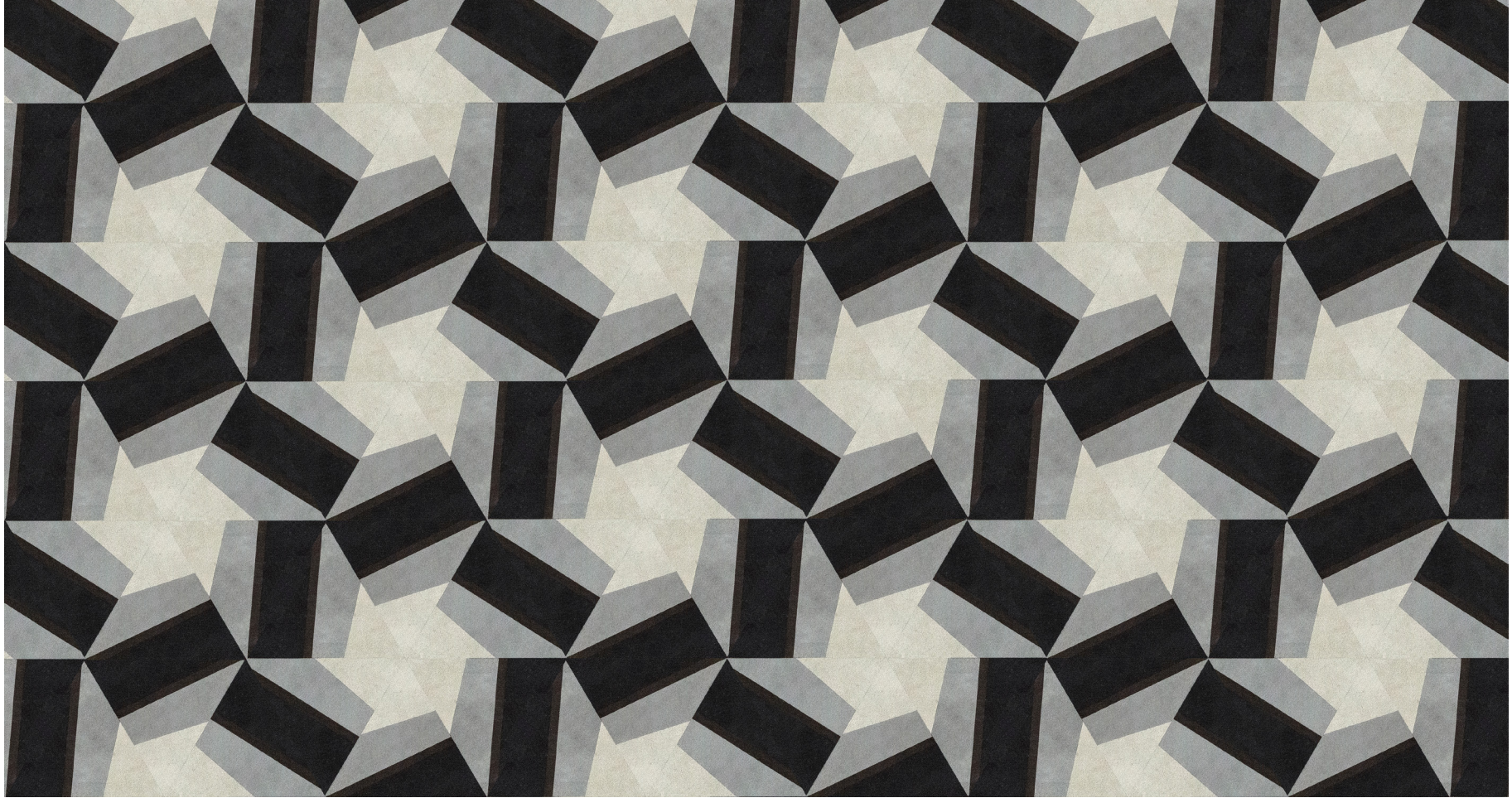
Giglio - 5



Floro - 13



Floro - 16



V I K

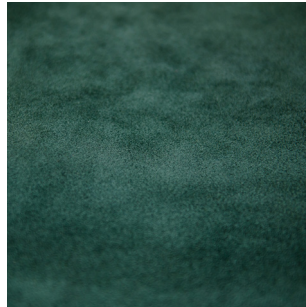
Pyxidie - 16

« [...] J'étais autant intrigué qu'ébloui [...] »

# Chromatique

## Mouzaïa

Coloris : **Abiès**



Coloris : **Dasos**



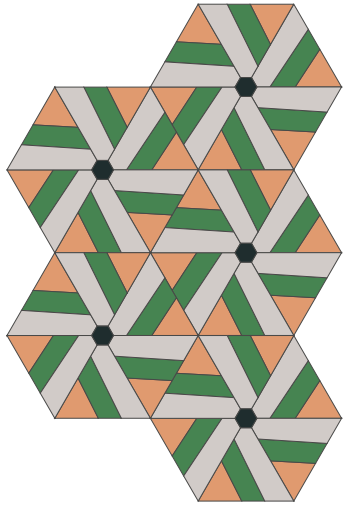
Coloris : **Concreto**



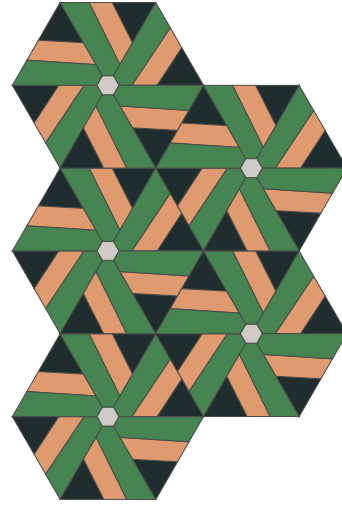
Coloris : **Flamingo**



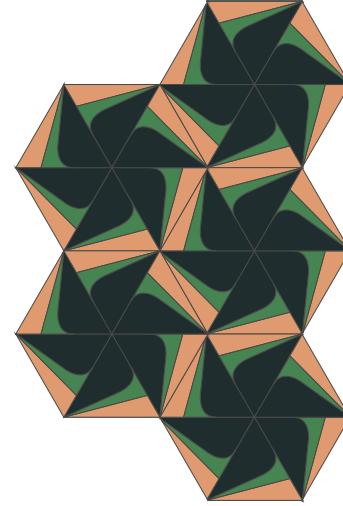
KALEÏDOSCOPE  
M O U Z A Ī A



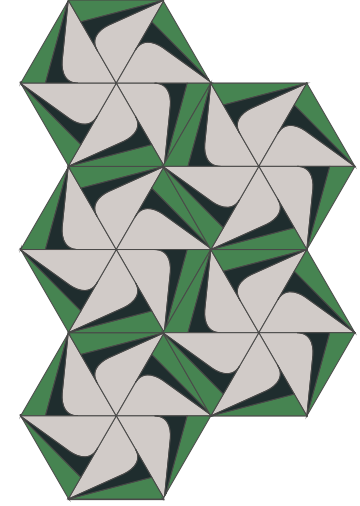
Strimena - 2



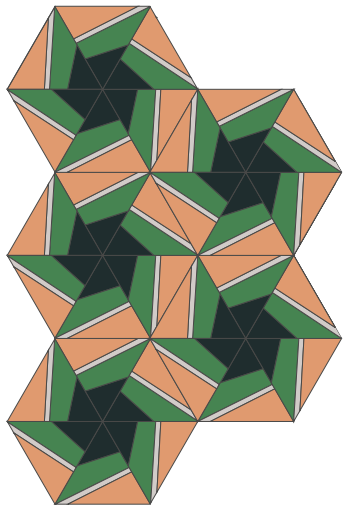
Strimena - 11



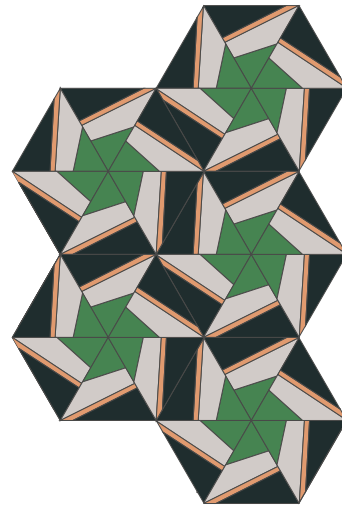
Giglio - 5



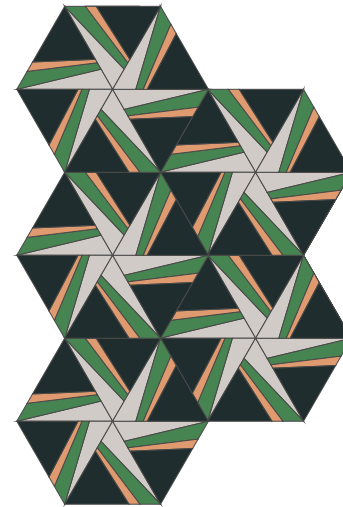
Giglio - 17



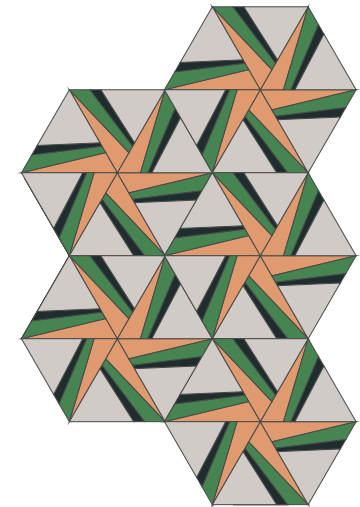
Pyxidìa - 3



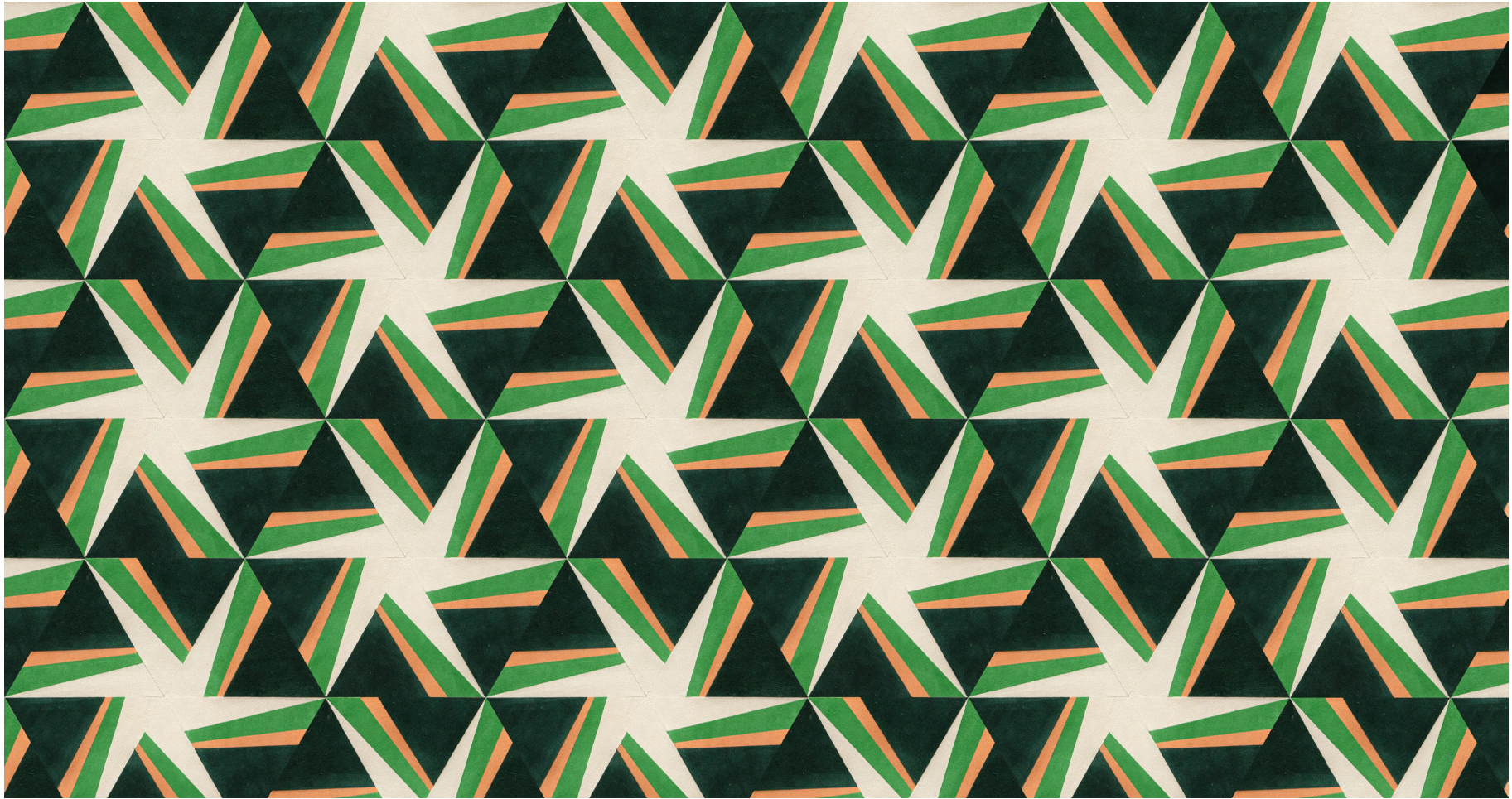
Pyxidìa - 18



Floro - 12



Floro - 20



M O U Z A Î A

Floro - 12

« [...] et bientôt voulus forcer l'appareil à me livrer son secret. [...] »

# Chromatique **Macchiato**

Coloris : **Vracoslava**



Coloris : **Politoma**



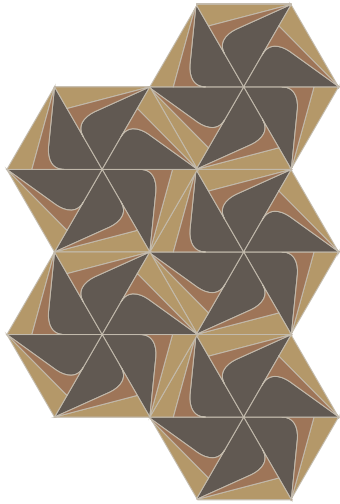
Coloris : **Concreto**



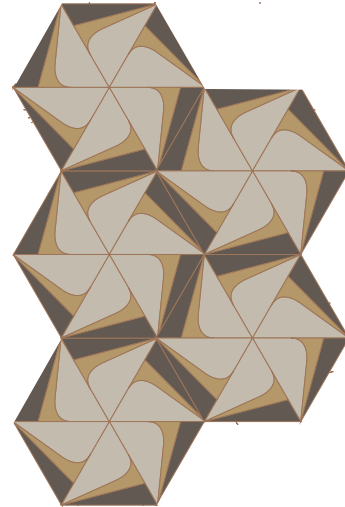
Coloris : **Pamos**



KALEÏDOSCOPE  
MACCHIATO



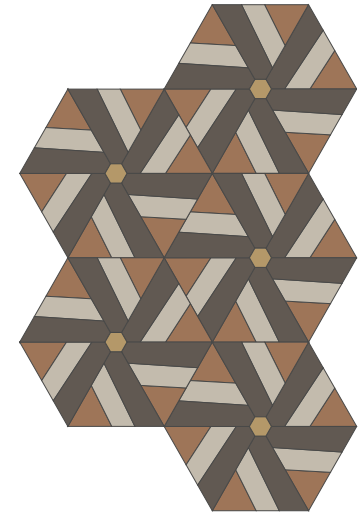
Giglio - 4



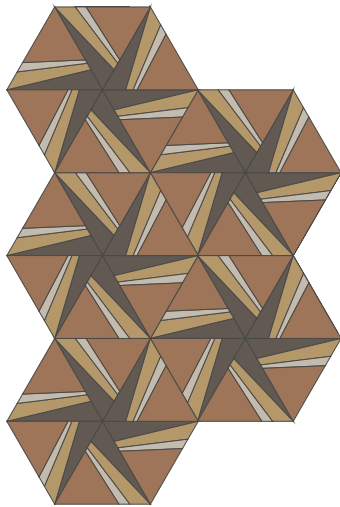
Giglio - 12



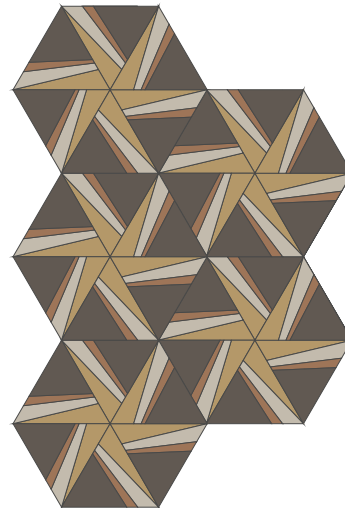
Strimena - 18



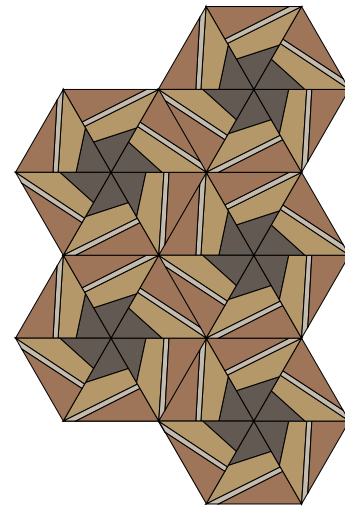
Strimena - 23



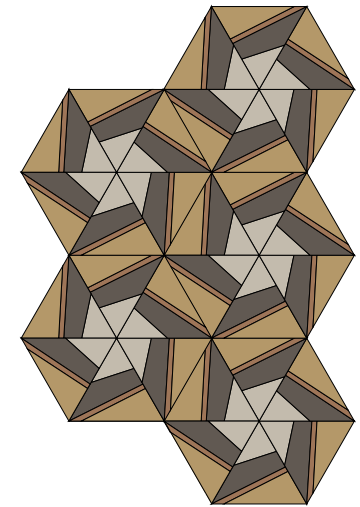
Floro - 1



Floro - 21



Pyxidia - 4



Pyxidia - 19



M A C C H I A T O

Pyxidie - 4

« [...] Je débouchai le fond [...] »



# Chromatique **Primary**

Coloris : **Palyno**



Coloris : **Zefiri**



Coloris : **Aima**

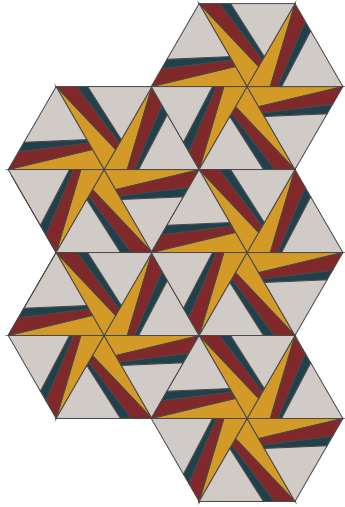


Coloris : **Concreto**

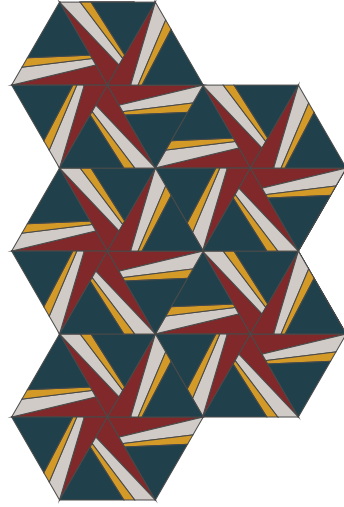


KALEÏDOSCOPE

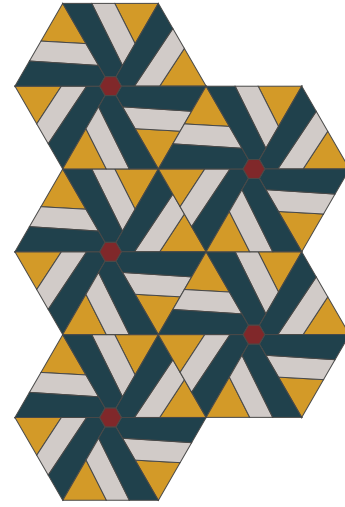
P R I M A R Y



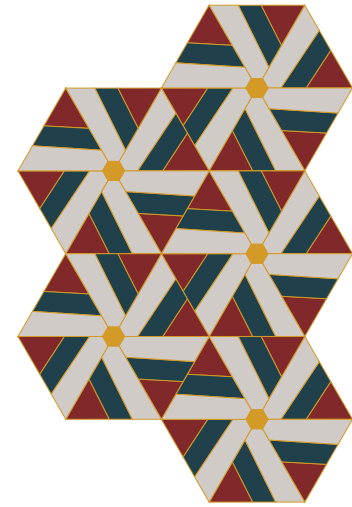
Floro - 9



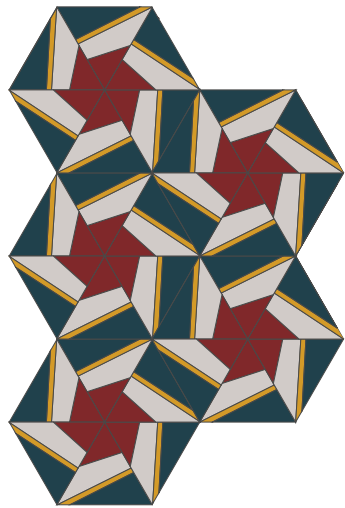
Floro - 24



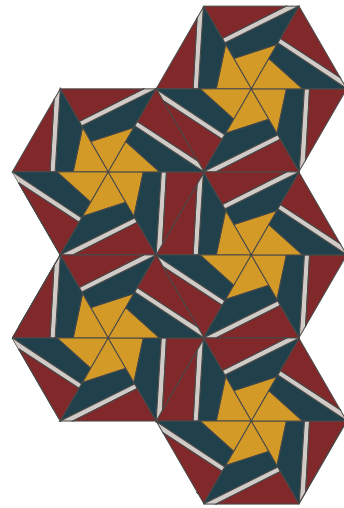
Strimena - 22



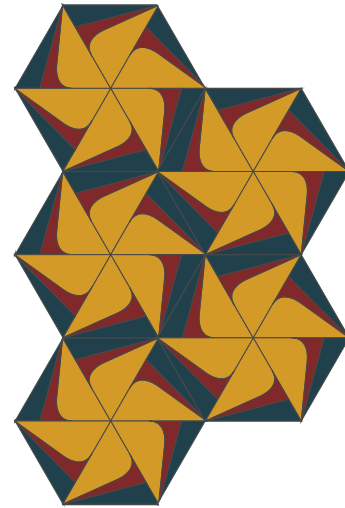
Strimena - 10



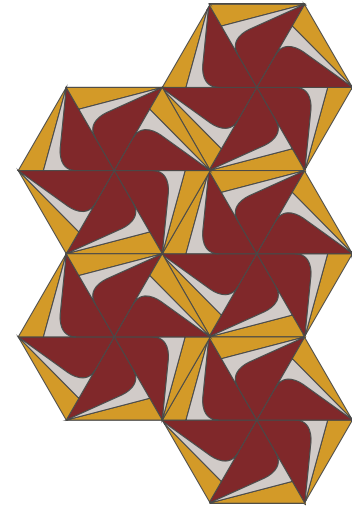
Pyxidra - 24



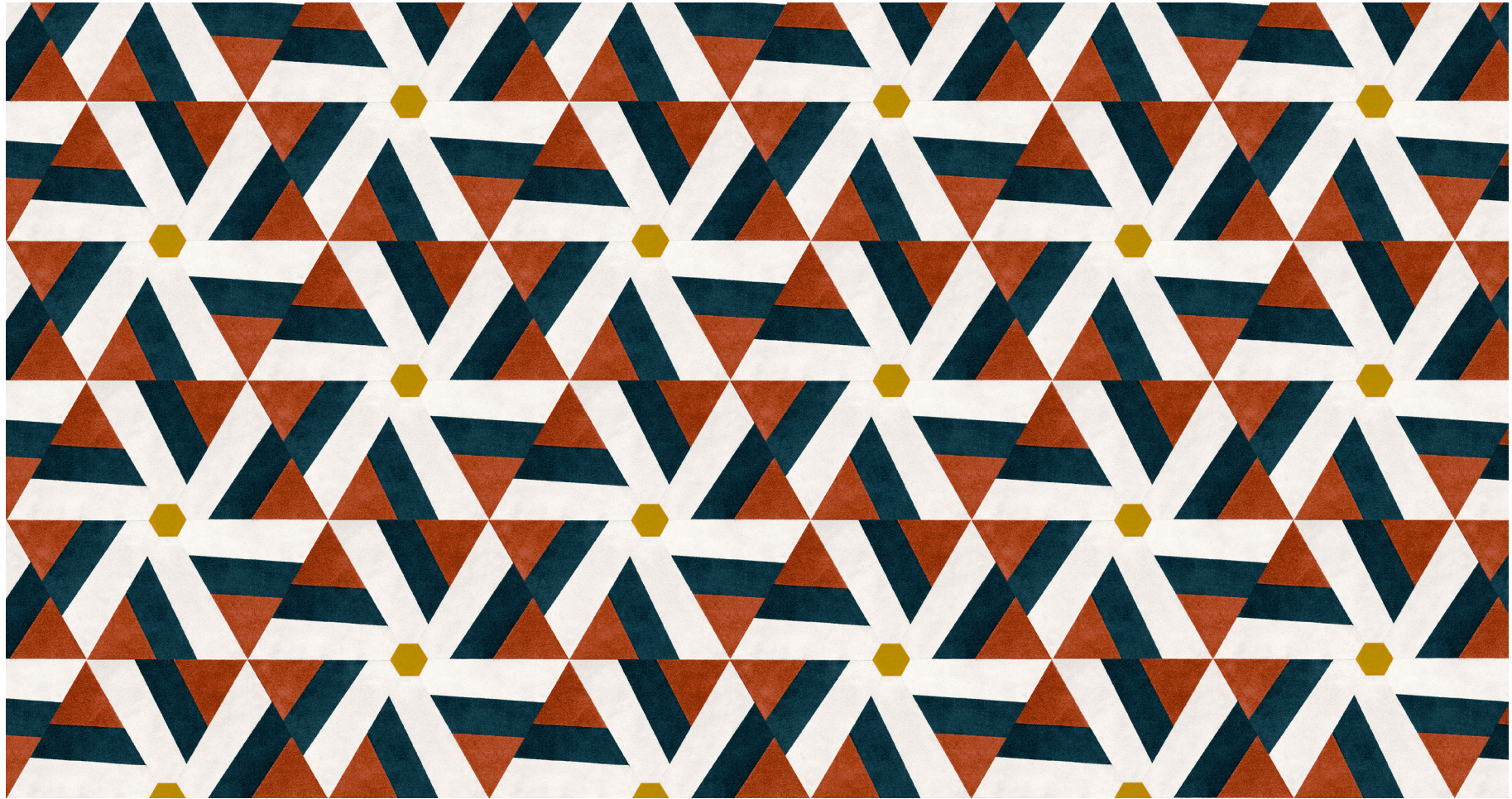
Pyxidra - 7



Giglio - 7



Giglio - 20



P R I M A R Y

Strimena 10

« [...] dénombrai les morceaux de verre [...] »

# Chromatique **Elafonisi**

Coloris : **Wadiram**



Coloris : **Kunzite**



Coloris : **Neraida**

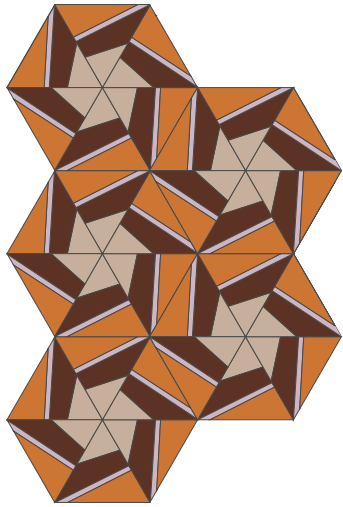


Coloris : **Pamos**

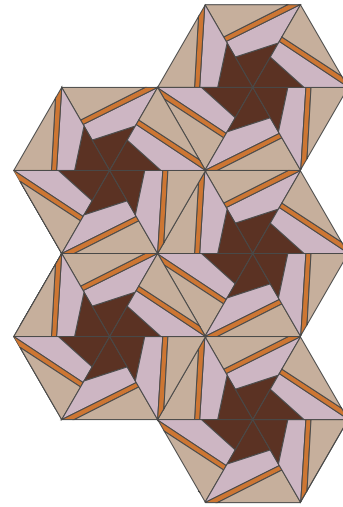


KALEÏDOSCOPE

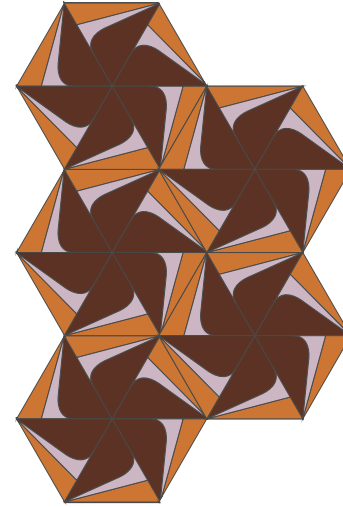
E L A F O N I S I



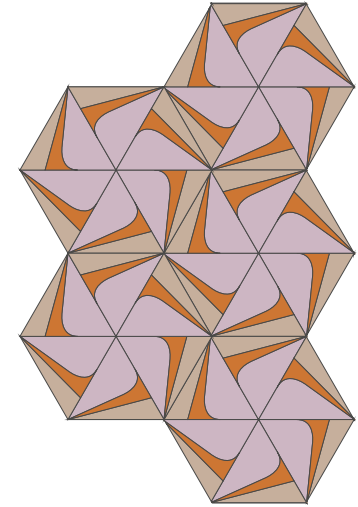
Pyxidia - 22



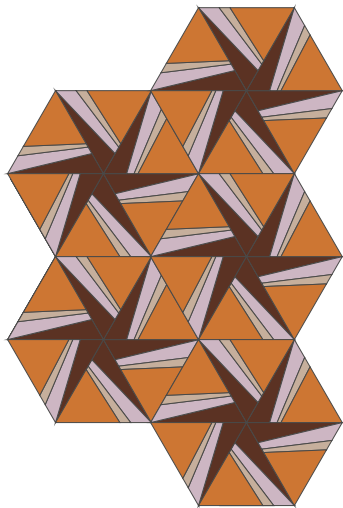
Pyxidia - 3



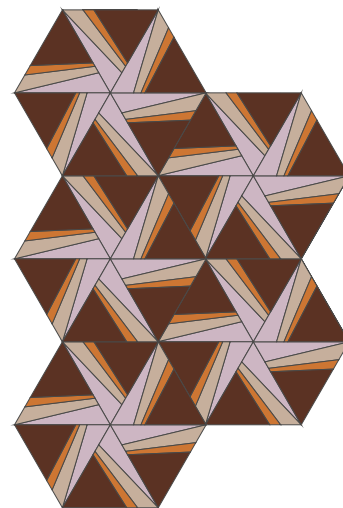
Giglio - 1



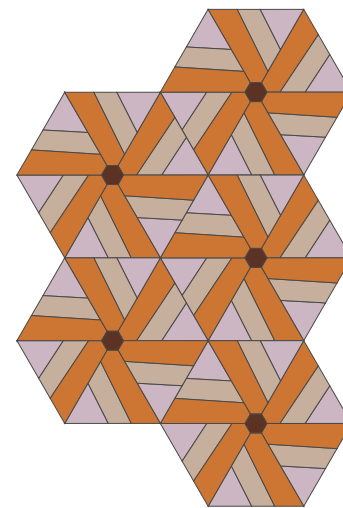
Giglio - 20



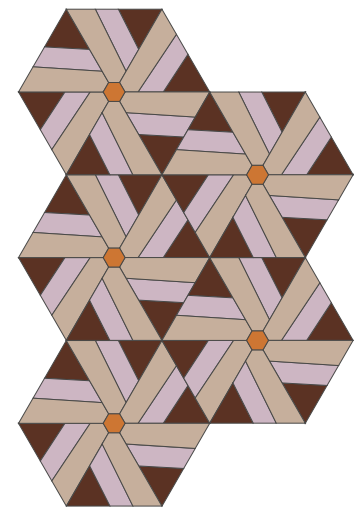
Floro - 2



Floro - 17



Strimena - 1



Strimena - 8



E L A F O N I S I

Giglio - 20

« [...] , dénombrai les morceaux de verre, et sortis du fourreau de carton trois miroirs... »

André Gide, Si le grain, 1924, p. 352.